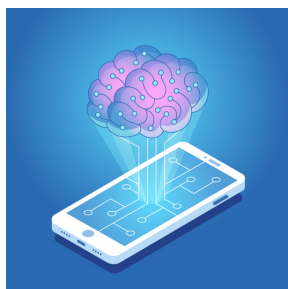
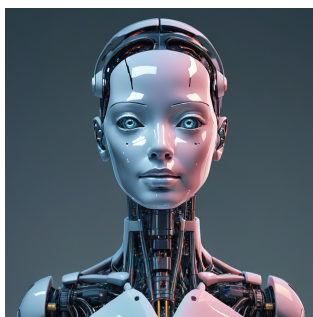


ARTIFICIAL INTELLIGENCE

What is it?

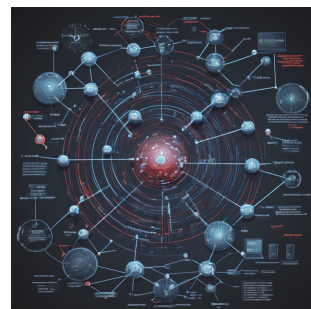


The theory and development of computer systems able to perform tasks that normally require human intelligence, such as visual perception, speech recognition, decision-making, and translation between languages. - From Oxford Dictionary



Robots

Current AI is being developed in order to advance robots in assisting in our every day lives and work environment.



Algorithms

Websites and search engines such as Google, Netflix, and even gaming apps use cookies in order to understand how and what people are looking for and how to best market services.

Questions and setbacks



Although AI can be an extremely powerful and useful source we still must remember that it is still limited. AI is created by replicating the human thinking process in limited ways. Meredith Broussard wrote in *Artificial Unintelligence: How Computers Misunderstand the World* how that we must check that these messages and tasks we sent AI to do are actually doing them correctly and thoroughly.

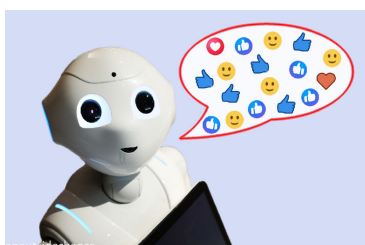
Siri



Siri is a powerful force in our every day life. On a survey from searchlogistics.com it was stated that 95% of I-phone users used the AI Siri features on their phones.

<https://www.searchlogistics.com/learn/statistics/artificial-intelligence-statistics/>

Human Input



Humans teach the algorithm to learn due to certain things that specific people add. This means that AI can be influenced by factors that are not just facts. Factors such as personal preferences and views.

<https://anoutsidechance.com/tag/artificial-intelligence/>



Photos generated with <https://gencraft.com/>